

# CAST BODY KNIFE GATE VALVES

FIG.74, ALL STAINLESS STEEL WITH D.I. TOP WORKS - FULL PORT - RESILIENT SEAT



## Design Features

- Locking handwheel nut.
- Provision for lockout lanyard.
- Heavy gate with wide spaced clevis.
- Wiper ring in stuffing box assists sealing during both operating and static conditions.
- Viton resilient seat with TFE impregnated packing for temperature to 300°F/150°C.
- Full port one piece cast body with integral resilient seat.
- Drip tight shut-off in both directions (Bi-directional).
- Full lug pattern. Drilled and tapped to class 150 flanges.
- Easy bolt-on conversion to actuator or bevel gear operator.

**Designed and tested to conform to  
MSS-SP81 and TAPPI TIS 405-8  
specifications.**

*Designed for shut-off on light consistency stock, white water or clear liquids. Valve rated for 150 psi working pressure.*



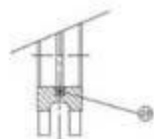
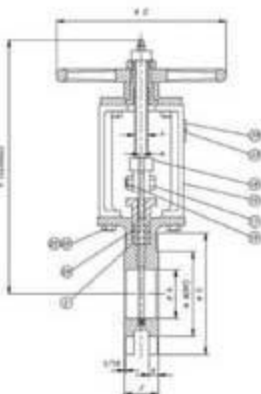
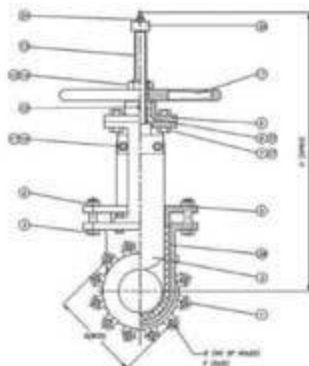
Tel: 305-663-4448 Fax: 305-663-4458  
sales@ameritek.net www.ameritek.net

# STAINLESS STEEL KNIFE GATE VALVES

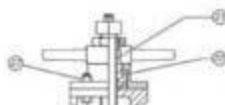
FIG.74, STAINLESS STEEL - FULL PORT - RESILIENT SEAT

FIG. 74B - CF8M (316)

FIG. 74L - CG8M (317)



RESILIENT SEAT DETAILS



FOR 16" TO 24"  
TOPWORK DETAILS

- Optional seat: HYCAR (BUNA N or NITRILE)
- Handwheel actuator standard.
- Chainwheel, bevel gear, electric or pneumatic actuators are available.
- Valves 30" and larger, or in special alloys like CN7m(Alloy 20), Duplex SS, Hastelloy are available on request

## DIMENSIONS - INCHES

VALVE SIZE	A	B	C	D	E	F	G	h	H	J	K	L	M	Weight/lbs
2	2	3 1/2	6	4 1/4	4	1 1/2	10	12 1/2	15	1 1/2	1 1/2	1 1/2	1 1/2	31
2 1/2	2 1/2	4 1/2	7	5 1/4	4	1 1/2	10	13 1/2	16 1/2	2	1 1/2	1 1/2	1 1/2	35
3	2 1/2	5	7 1/2	6	4	1 1/2	10	16 1/2	19 1/2	2	1 1/2	1 1/2	1 1/2	38
4	4	6 1/2	9	7 1/2	8	1 1/2	10	19 1/2	23 1/2	2	1 1/2	1 1/2	1 1/2	65
6	6	8 1/2	11	9 1/2	8	1 1/2	10	22 1/2	29 1/2	2 1/2	1 1/2	1 1/2	1 1/2	86
8	8	10 1/2	13 1/2	11 1/2	8	1 1/2	10	26 1/2	34 1/2	2 1/2	1 1/2	1 1/2	1 1/2	140
10	10	12 1/2	16	14 1/2	12	1 1/2	9	18	30 1/2	4 1/2	2 1/2	1 1/2	1 1/2	187
12	12	15	19	17	12	1 1/2	9	18	34 1/2	4 1/2	3	1 1/2	1 1/2	225
14	13 1/2	16 1/2	21	18 1/2	12	1-8	20	38 1/2	52 1/2	3	1 1/2	1 1/2	1 1/2	274
16	15 1/2	18 1/2	23 1/2	21 1/2	16	1-8	20	45 1/2	59 1/2	3 1/2	1 1/2	1 1/2	1 1/2	410
18	17 1/2	21	25 1/2	23 1/2	16	1 1/2-7	24	49 1/2	67 1/2	3 1/2	1 1/2	1 1/2	1 1/2	435
20	19 1/2	23	27 1/2	25	20	1 1/2-7	24	57 1/2	77 1/2	4 1/2	1 1/2	1 1/2	1 1/2	598
24	23 1/2	27 1/2	32	29 1/2	20	1 1/2-7	30	63 1/2	98 1/2	4 1/2	1 1/2	1 1/2	1 1/2	771

## DIMENSIONS - MILLIMETERS

VALVE SIZE	A	B	C	D	E	F	G	h	H	J	K	L	M	Weight/kg.
50	51	92	152	121	4	1 1/2	216	324	381	48	13	19	8	14
65	63	105	178	140	4	1 1/2	216	340	416	51	13	19	8	16
80	73	127	191	152	4	1 1/2	254	424	500	51	13	19	8	17
100	102	157	229	191	8	1 1/2	254	484	594	51	13	19	8	30
150	152	216	279	241	8	1 1/2	356	583	740	57	16	29	8	39
200	203	270	343	298	8	1 1/2	356	675	883	70	16	29	10	64
250	254	324	406	362	12	1 1/2	457	783	1045	70	19	29	12	85
300	305	381	483	432	12	1 1/2	457	884	1197	76	19	29	15	102
350	337	413	533	476	12	1-8	508	980	1344	76	21	38	15	125
400	387	470	597	540	16	1-8	508	1156	1518	89	22	38	20	186
450	438	533	635	578	16	1 1/2-7	610	1257	1711	89	24	38	20	198
500	489	584	689	635	20	1 1/2-7	610	1464	1960	114	25	38	25	272
600	591	692	813	749	20	1 1/2-7	782	1607	2500	114	25	38	25	350

Item	Description	74B	74L
1	Body	CF8M	CG8M
2	Gate	316	317
3	Packing	TFE Impregnated	
4	Gland Bolts	Plated Steel	
5	Gland	CF8M	CG8M
6	Gland Nuts	Plated Steel Nylock	
7	Sleeve Housing Bolts	Plated Steel	
8	Stem Sleeve	B960 (Bronze)	
9	Sleeve Housing	Ductile Iron	
11	Handwheel	Ductile Iron	
12	Handwheel Nut	Plated Steel	
13	Stem	304	
14	Nut Locking Screw	Plated Steel	
15	Grease Nipple	Plated Steel	
16	Clevis Nuts	Plated Steel Nylock	
17	Clevis bolts	Plated Steel	
18	Clevis	CF8	
19	Yoke	Ductile Iron	
20	Nameplate	Aluminium	
21	Handwheel Key	Steel	
22	Thrust Bearing	Ball	
23	Rivets	Aluminium	
24	Wiper Ring	Viton	
25	Yoke Bolts	Plated Steel	
26	Yoke Nuts	Plated Steel Nylock	
27	Housing Nuts	Plated Steel Nylock	
28	Resilient Seat	Viton	
29	Reinforcing Wire	316	
30	Adjusting Nut	304	
31	Lock Nut	Plated Steel Nylock	



AMERITEK Industrial Corp.

Tel 305-663-4448 Fax: 305-663-4458  
sales@ameritek.net www.ameritek.net



FLOW CONTROL  
COMPONENTS